



Vardan Envirolab LLP
Vardan Environet LLP

Testing & Consulting
Services

VARDAN



Corp. Office & Laboratory:

Plot No. 82A, Sector -5,
IMT Manesar, Gurugram - 122051 (Hr)

P : 0124 4343750, 9953147268, 9810355569

E : info@vardan.co.in, bd@vardan.co.in

Branch Office:

Plot No. 24&25 Narayan Vihar, Block B,
Jaipur (Rajasthan) 302029

P : 8448791006

E : jaipur@vardan.co.in

www.vardan.co.in

Revision No. 9 dt 01-09-2025

about US



Established in 2012, Vardan Group has grown into a leading environmental consulting organization, providing specialized services for mining, infrastructure development, and industrial projects. Over the years, we have expanded into multiple disciplines and today offer a wide range of testing and consulting services.

Consulting Services

- Environmental Impact Assessment (EIA)
- Forest and Wildlife studies and clearances
- Consultancy for Pollution Board clearances
- Social Impact Assessment (SIA)
- Environmental and Pollution Compliances
- Ground Water Impact Assessment & Ground Water NOC
- Mineral Exploration

With a team of more than 300 experienced professionals, including senior officers from reputed institutions such as the Pollution Control Board, Mines & Geology, SAIL, NEERI, CSIR, NABL, and FRI, we bring unmatched expertise to every project.

Our state-of-the-art laboratories, located in IMT Manesar (Gurugram) and Mansarovar (Jaipur), cover more than 33,000 sq. ft. and are fully equipped to deliver precise testing and reliable consulting services.

Testing Services:

- Footwear Products Testing
- Environment & Pollution Testing
- Food & Agriculture Products Testing
- Drug and Pharmaceuticals Testing
- Ayurvedic Products Testing
- Cosmetics Products Testing
- Testing of Medical Devices
- Microbiological Testing

Accreditation, Approvals & Certification:

- Approved EIA Consultant by QCI-NABET (National Accreditation Board for Education & Training)
- Approved Consultant by Central Ground Water Authority (CGWA)
- Mineral Exploration Consultant Approved by NABET & Ministry of Mines National Mineral Exploration Trust (NMET)
- Accredited Laboratories by NABL (National Accreditation Board for Testing and Calibration Laboratories)
 - Food Testing Lab Approved by Food Safety and Standards Authority of India
 - Approved by MoEF&CC (Ministry of Environment, Forests & Climate Change) & CPCB (Central Pollution Control Board Recognized)
 - Drugs & Pharmaceuticals Lab Approved by Food and Drug Administration Department
 - AYUSH (Ayurvedic, Unani, and Siddha Medicines Testing Lab) Approved by Ministry of Aayush
 - Medical Devices/Accessories & Surgical Products Testing Lab Approved by Central Drugs Standard Control Organisation (CDSCO)
 - Cosmetics Testing Lab Approved by Food and Drug Administration Department
- Certified Lab Good Laboratory Practice (GLP)
- Footwear & Water Testing Lab Approved Lab by Bureau of Indian Standards (BIS)
- Footwear Testing Lab Accredited by Quality and Accreditation Institute (QAI)
- ISO 9001, 14001 and 45001 Certified

MANAGEMENT TEAM

Shri R.S. Yadav



Co-Founder & Managing Director

Shri Yadav founded the organization with a vision of establishing one of India's leading consulting and testing laboratories. With over 30 years of service as District Mining Officer in the Department of Mines & Geology, Government of Haryana.

- Approved EIA Coordinator by QCI-NABET in Mining, Building Construction, and Large Area Development projects.
- Recognized Mine Planner (RQP) by the Indian Bureau of Mines.

Late: Shri S.K. Sharma



Co-Founder

Shri Sharma co-founded the organization alongside Shri R. S. Yadav, bringing with him over 40 years of experience as a Senior Scientist at the Haryana Pollution Control Board. He was Approved EIA Coordinator by QCI-NABET in Mining, Distilleries, Sugar Industry, Chemical, Township, and Area Development projects. Served as Lead Auditor for QMS, EMS, and NABL Assessor.

| NAME | DESIGNATION | EXPERIENCE | ROLE IN THE ORGANIZATION |
|-----------------------|-------------------------|------------|--|
| Roopika Sharma | Partner | 15 years | Responsible for overseeing all financial, human resource, and administrative functions of the organization. |
| Aman Sharma | Partner | 20 years | Expert in EIA of airports, township and area development projects, as well as consent management and compliance of Environmental Clearances (EC). Approved EIA Coordinator by QCI-NABET. Actively contributes to business development and strategic growth. |
| Anshul Yadav | Partner | 12 years | Specializes in Environmental Impact Assessments (EIA) for metallurgical industries, coal & mining projects, oil & gas transportation & storage, sugar industries, and distilleries. Management Representative & Actively contributes to business development and strategic growth. |
| Radhika Agarwal Yadav | Chief Marketing Manager | 7 years | Leads business development and marketing activities, expanding the organization's outreach and client base. |

CORE TEAM

| NAME | DESIGNATION | EXPERIENCE | ROLE IN THE ORGANIZATION |
|------------------------|---|------------|--|
| Mr. K.M. Khare | Advisor Former DGM-Environment (Steel Authority of India) | 40 years | Expert in Metallurgical Industries, Coke Ovens, Mining, Mineral Beneficiation and Coal Washery with over 40 years of experience. He is approved EIA Coordinator by QCI-NABET |
| Mr. V. Pugazhendi | Advisor (Former Sr. Hydrogeologist) TWAD, Govt. of Tamil Nadu | 35 years | Expert in Ground water management and hydrogeological investigations. He is an approved ground water modeller from CGWA |
| Dr. R.K. Sharrma | Advisor Former as Director from Geological Survey of India | 33 years | Expert in Mineral Exploration of Critical Rare Earth Mineral & Geological Mapping, Planning and Reserve Calculation Report |
| Mr. R.K. Singh | Advisor Former General Manager from CMPDI | 35 years | Expert In Geophysical survey of Critical Rare Earth Mineral, DSS, Drilling, Data acquisition, Planning, Processing and Interpretation. |
| Dr. B.B. Sharrma | Advisor Former as Director from Geological Survey of India | 33 years | Expert in Mineral Exploration of Critical Rare Earth Mineral. Extensive Experience in Drilling, core logging, Large and detailed Geological Mapping collected samples. |
| Mr. K.S. Yadav | Advisor Former Regional Controller of Mines (IBM) | 40 years | Over 40 years of expertise in mining, beneficiation, regulatory affairs, and sustainable development with a proven track record in mineral conservation, EIA/EMP & technical environmental considerations. |
| Mr. Mrinal Kumar | General Manager (EIA) | 12 years | Expertise in EIA, Social Impact Assessment, Rehabilitation & Resettlement Action Plan, ESIA, ESDD, Public Consultation, Stakeholder Management etc. He is QCI-NABET Accredited FAE (SE) in Category A. |
| Dr. Sunil Prasad | General Manager (EB) | 18 years | Expert in EIA, Environment, Ecology & Biodiversity, Wildlife clearance and Natural Resouce Management (NRM). Approved FAE & EB by QCI-NABET. |
| Mrs. Shilpa Mishra | Dy. General Manager- SIA | 18 years | Expert in Social Impact Assessment (SIA) Rehabilitation & Resettlement (RR) and She is approved by QCI NABET |
| Shubham Tyagi | Sr. Manager - EIA | 10 years | Expertise in EIA of Industrial, Building and mining projects, All Environment assignments Approved Coordinator and Expert by QCI-NABET. |
| Mr. Manoj K. Saini | Sr. Manager - Marketing | 16 years | Responsible for business development through tendering and proposal management; NABET-accredited Functional Area Expert in AP, WP & AQ |
| Mr. Prashant K. Yadav | Sr. Hydrogeologist | 11 years | Expert in Ground Water Management and Hydrogeological Investigations. He is an approved ground water modeller from CGWA and NABET approved FAE in Hydrogeology, Geology. Ground Water Modelling |
| Dr. Jaswant Ray | General Manager All Labs Operations-QC/QA | 13 years | Expertise in Food, Pharma, Ayush, Water, Environment, Nutraceutical, QMS as per ISO/IEC 17025, ISO 9001, 14001, 45001, GLP & Assessor NABL/QCI. |
| Dr. Gaurav Chauhan | Lab Incharge & Quality Manager | 13 years | Quality & Technical work for Laboratories at Gurgaon. Authorized Signatory for NABL & MoEF & CC (GOI) Reports. |
| Dr. Shiv Prakash Singh | Sr. Technical Manager | 12 years | Food & Agriculture Products, Environmental & Quality Control. All business processes are aligned with the requirements of the regulatory standards. |
| Mr. Dharmendra Dixit | Technical Manager (Micro) | 11 years | FSSAI-food analyst with Microbiological experience in testing of Food, Water, Cosmetics, Ayurvedic and Pharmaceuticals products. |
| Manoj Kurmi | Technical Manager (Food) | 11 years | Expertise in Food & Agriculture Products, Quality Control and Latest instruments such as LC-MSMS, ICP-MS, ICP-OES, HPLC, GC-MS. |
| Arun Kumar | Technical Manager (Pharma) | 17 years | Expertise in Testing for Pharmaceuticals, Cosmetics, Ayush & Medical Devices. All business processes are aligned with the requirements. |
| Mr. Vijendra Kumar | Quality Manager (Jaipur Lab) | 14 years | Expertise in Testing for Environmental, Quality Control. All business development activities with the requirements of the regulatory standards. |

ENVIRONMENT CONSULTING

Vardan is accredited by QCI-NABET for preparing Environmental Impact Assessments (EIA) and approved by the Central Ground Water Authority (CGWA) for conducting Ground Water Impact Assessments. Our mission is to deliver technically sound and economically viable solutions in environmental management, helping industries and infrastructure projects achieve compliance while promoting sustainability.

Environmental Management Services

- Environmental Impact Assessment (EIA) & Environmental Management Plan (EMP)
- Environment Audits
- MoEF&CC, SEAC, SPCB, Post EC, Consent & Regulatory Compliances
- Environment & Social Due Diligence (ESDD)
- Social Impact Assessment (SIA)
- Ecology & Biodiversity Studies
- Preparation of Wildlife Conservation Plans

Ground Water Management Services

- Hydrogeological Investigation & NOC from CGWA
- Ground Water Modelling Ground Water Impact Assessment
- Rain Water Harvesting Feasibility Study
- Geophysical & Resistivity Survey
- GHG Emission Inventorization & Reduction
- Mineral Exploration Studies
- Forest Clearances

GIS & Remote Sensing

- Land Use & Land Cover Mapping
- Watershed Mapping
- Area Drainage Mapping
- Thematic Mapping
- NDVI Mapping
- Land Use Change Detection
- Satellite Image Processing
- Satellite Image Procurement from NRSC
- Cadastral Map[ping]
- 3D Modelling, Digital Elevation Model
- Urban/Rural Area Planning & Management

Accredited by
NABET & CGWA



NABET SECTORS

| S No. | Group | Sectors |
|-------|--------------------------------------|---|
| 1. | Mining and Mineral Processing | Non-Coal Mining Coal Mining Mineral Beneficiation Plants Coal Washeries |
| 2. | Industries | Cement Plants Metallurgical Sugar Mills Distilleries Coke Ovens Chemical Manufacturing Petrochemical Complexes Chemical Fertilizers |
| 3. | Power | Thermal Power Plants Hydro Power Plants |
| 4. | Infrastructure Projects and Services | Airports Highways & Metro Rail Irrigation Projects Building Construction Industrial Estates Area Development & Township Oil & Gas Exploration, Development & Production Oil & gas transportation pipelines |

ENVIRONMENTAL TESTING

Our state-of-the-art laboratories are equipped with advanced instruments and staffed by highly qualified professionals, enabling us to deliver reliable baseline studies and compliance monitoring for construction, mining, and industrial projects.

Monitoring & Testing Capabilities

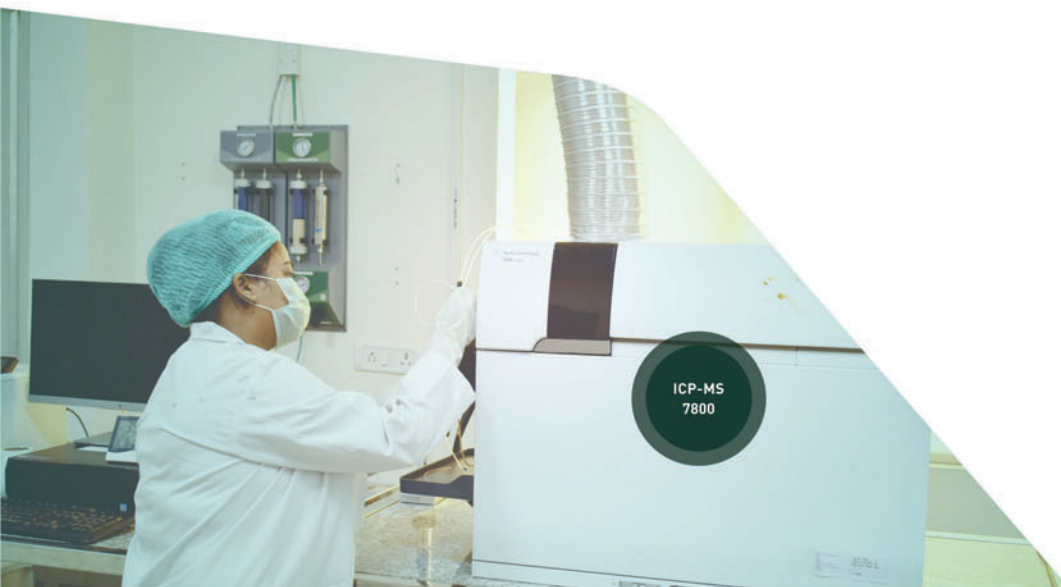
- Emission Monitoring: Stack emissions from DG sets, boilers, furnaces & incinerators
- Noise Monitoring: Ambient noise, work zone noise, DG sets
- Air Quality: Ambient air & indoor air quality monitoring
- Micro-Meteorological Monitoring
- Soil Quality Analysis
- Lux levels, occupational exposure
- Hazardous Waste Analysis: TCLP tests, sludge, used oil
- Water Quality: Testing of ground, surface, waste, and drinking water
- Packaged Drinking Water Testing (IS 14543)
- Packaged Natural Mineral Water Testing (IS 13428)

Advanced Instruments:

- LC-MSMS
- FTIR Cary
- ICP-MS
- ICP OES
- ICP-OES
- TOC Analyzer
- GC FID
- Ion Chromatography
- GC-MSMS
- AAS 303
- GC-HS
- Millipore Water System

Approved by
MOEF, CPCB, NABL
& BIS

ICP-MS
7800



PHARMACEUTICAL TESTING

Vardan offers comprehensive testing services for pharmaceuticals, cosmetics, AYUSH products, and medical devices, utilizing high-quality equipment and advanced technology. Our state-of-the-art facilities and expert team ensure precise, reliable, and compliant testing across various industries.

- Identification, Uniformity of content
- Uniformity of weight/mass/volume/fill
- Dissolution Profile
- Related Substances and Impurity
- Presence of Steroids
- Organic Volatile Impurities
- Heavy Metals
- Medical Device Testing
- Particle Size
- Fatty Acids/Esters
- Acid Value, Peroxide Value
- Saponification Value
- Iodine Value
- Optical Rotation
- Refractive Index etc.

Method Validation

- ✓ Nitrosamines
- ✓ Residual Solvent
- ✓ Impurities
- ✓ Assay
- ✓ Inorganic Impurities
- ✓ Extractable & Leachable
- ✓ ETO & ECH
- ✓ Swap Validation
- ✓ Process Validation
- ✓ Raw Material
- ✓ Stability Studies
- ✓ Analytical Method Validation
- ✓ Microbiology Method Validation
- ✓ Finished Good

Instruments:

- ICP-MS
- GC FID
- GC-MSMS
- GC-HS
- Dissolution
- FTIR Cary
- ICP OES
- AAS 303
- HPLC

Approvals from
FDA, CDSCO
& Ayush

HPLC
1260



FOOD PRODUCTS TESTING

Vardan is providing food testing for a wide range of food & agricultural products. Accredited by NABL & FSSAI. in the field of testing (Chemical and Biological). Regularly Participate in Inter Laboratory Comparison (ILC) studies and Proficiency Testing (PT).

- Heavy Metals using ICPMS
- Microbial Limits & pathogens
- Pesticide Residues
- Athatorins
- Food Additives
- Nutritional Labelling
- Amino Acid Profiling
- Sugar Profiling

Whether you are bringing new innovative food to the market. We can help you identify regulatory requirements and define performance criteria. From producers and distributors to retailers our experts can work with you to make the most of rapidly expanding world of possibilities, ensuring, regulatory compliance and delivering customer satisfaction.

Our lab is approved from FSSAI & NABL as below mentioned categories

- Dairy Products & Analogues
- Sweets & Confectionery
- Fat, Oils & Fat Emulsions
- Salt, Spices, Condiments & Related Products
- Cereals & Cereal Products
- Beverages (Alcoholic)

Instruments:

- ICP-MS
- GC-FID
- GC-MSMS
- GC-HS
- FTIR Cary 630
- LC-MSMS
- UV Spectrophotometer
- HPLC 1260
- AAS 303
- IC 925

Instruments:

- ICP-MS
- GC FID
- GC-MSMS
- GC-HS
- FTIR Cary

Accredited from
NABL & FSSAI

LC-MSMS
6470 TO



FOOTWEAR TESTING

Physical Testing

Upper & Lining

- Burst Strength
- Martindale Abrasion
- Water Penetration
- CF to Rubbing / Water
- Flexing Resistance
- Tear Strength/Tensile Strength
- Thickness

Insole

- Abrasion Resistance
- Water Absorption and Desorption
- Thickness

Outsole

- Tensile Strength
- Aging test for sole
- Hardness
- Sole abrasion resistance

Lace

- Lace Abrasion
- Lace Strength
- Lace Tag Strength

Heel

- Heel Fatigue Resistance
- Heel Impact Resistance
- Heel Attachment

Whole Shoe

- Slip Resistance
- Whole shoe flexing
- Upper / Outsole Bond Strength
- Component Attachment

Chemical Testing

- Azo Dyes
- Chromium VI
- Release of Nickel
- Determination of Formaldehyde
- Phthalates (7)
- Organotin Compounds
- Dimethylfumarate
- Allergenic and carcinogenic Dyestuffs
- Pentachlorophenol
- pH

Instruments:

- UTM
- SLIP RESISTANCE
- DRUM ABRASION MACHINE
- WAHING TESTER
- ROSS FLEXING TESTER
- MARTINDALE ABRASION TESTER
- HPLC
- GC-MS
- GC-MSMS
- LC-MSMS
- ICP-MS
- GC-HAS

